

# SUMMERFIELD SUITES®

A Global Hyatt Affiliate

## BELMONT, CALIFORNIA



### FEATURES & SERVICES

- Spacious one-and two-bedroom suites comfortably accommodate both work and rest
- Over 1,700 square feet of meeting space that accommodates up to 60
- Courtyard with heated pool & BBQ pavilion
- Fitness center
- Complimentary grocery shopping service
- Dry cleaning services and guest laundry rooms
- Complimentary shuttle service within a five mile radius
- 24-hour convenience store
- Facsimile and copy service
- On-site video rentals
- Earn free nights with Hyatt Gold Passport®\*

### DINING & ENTERTAINMENT

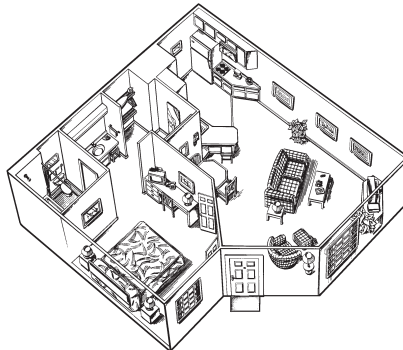
- Complimentary daily breakfast buffet featuring hot selections, plus a cereal and fruit bar, breads, juices and coffee
- Complimentary social hour with beer, wine and light appetizers Monday through Thursday 5:30pm-7pm
- Local area restaurant delivery service

### GUEST SUITE FEATURES

- Suites offer a full kitchen – refrigerator, microwave & coffee maker
- Free high-speed Internet access
- Full size desk with data port and private voice mail
- Alarm clock radio
- Portico® bath products
- Cable TV with VCR
- Hair dryer
- Handicap accessible rooms available
- Iron/ironing board
- Nonsmoking rooms available
- Weekday newspaper

### GUEST SUITES

#### One-Bedroom Suite



#### Two-Bedroom/Two-Bathroom Suite



### POINTS OF INTEREST

- Bay Meadows Horse Racing
- Half Moon Bay
- Silicon Valley
- Stanford Shopping Center
- Stanford University

### TRANSPORTATION

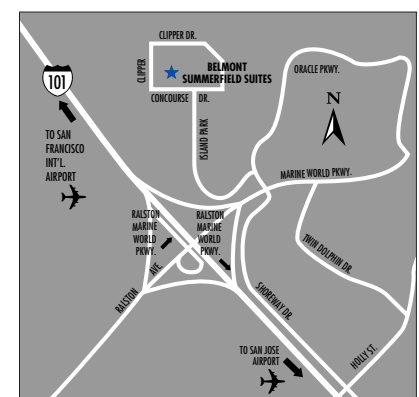
Complimentary shuttle within a 5 mile radius. Please make arrangements in advance. Inquire at the front desk for details.

### DIRECTIONS

*From San Francisco/San Francisco International Airport (SFO):* Take Highway 101 South to the Ralston Avenue/Marine World Parkway Exit. Follow the signs towards Marine World Parkway and make a left onto Marine World Parkway, going over the freeway. Stay in your left lane and make a left at Island Parkway (the first stoplight). Follow Island Parkway to the end, and make a slight left on Concourse Drive. The hotel will be on your right.

*From San Jose/San Jose International Airport (SJC):* Take Highway 101 North to the Ralston Avenue Exit. Follow the Ralston Avenue exit and go straight.

The road turns into Island Parkway. Follow Island Parkway to the end, and make a slight left on Concourse Drive. The hotel will be on your right.

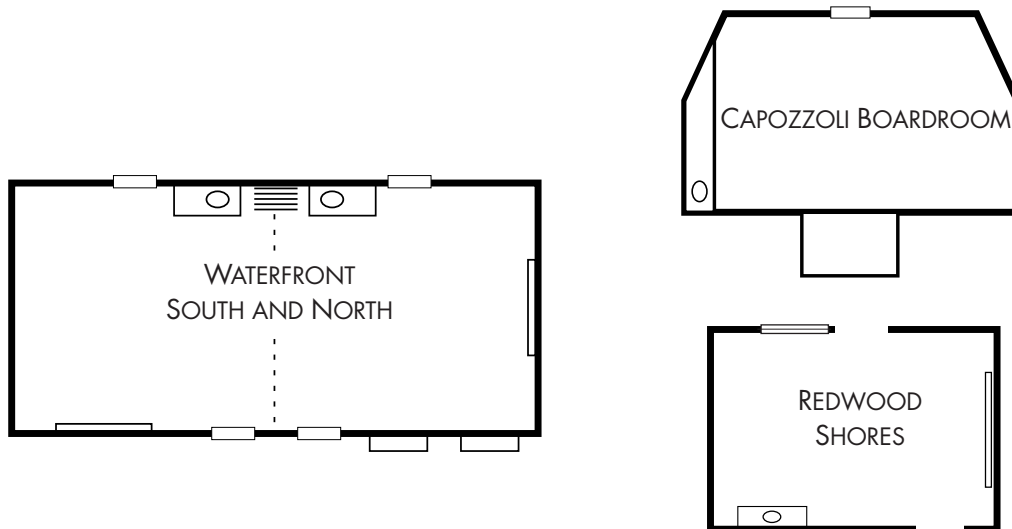


## MEETING SPACE CAPACITY CHART\*\*

NAME OF ROOM	DIMENSIONS	SQ. FT.	BANQUET	CLASSROOM	THEATER
WATERFRONT S	22' X 23'	506	20	25	30
WATERFRONT N	22' X 23'	506	20	25	30
WATERFRONT S and N	22' X 46'	1012	40	50	60
CAPOZZOLI BOARDROOM	24' X 13'	312	12	12	12
REDWOOD SHORES	18' X 26'	468	20	20	20

\*\*Our meeting room capacities have been calculated using the Meeting Professionals International Comfort Calculator.

## CONFERENCE/MEETING ROOMS



### THE ESSENTIALS

We offer everything you need to make your event easy and comfortable.

- Extension cords with power strips
- Ice water and glasses
- In-house meeting consultant
- Phone line with speaker/conference call ability
- Whiteboard writing surface with pens and eraser

### THE EXTRAS

The following items are available upon request for a fee.

- Audio/Video equipment
- Catered gatherings
- Fax transmissions and photocopying
- Flip charts
- Overhead projectors

Please contact the meeting coordinator for a detailed listing of equipment available.

### CATERING CAPABILITIES

Our affordable catering services provide exquisite fare for up to 60 guests.

- Extensive variety of menus for any occasion
- We are happy to facilitate any special menu request you may have. Please contact our meeting coordinator for a detailed listing of menu recommendations.

# SUMMERFIELD SUITES®

A Global Hyatt Affiliate

400 Concourse Drive, Belmont, California 94002 650-591-8600 Fax: 650-592-8900

summerfieldsuites.com

866-974-9288

SUMMERFIELD SUITES and HYATT GOLD PASSPORT name, design, and related marks are trademarks of Hyatt Corporation. © Hyatt Corp. All rights reserved.

\*The earning and redemption of free night awards is subject to the terms and conditions of the Hyatt Gold Passport program. Visit goldpassport.com for complete details.